

The Church in Pittsburgh

Pittsburgh, Pennsylvania

Information for Saints Interested in Migration

Contact: Tom Piccone (tjpiccone@gmail.com); Andy Wang (andywang.sg@gmail.com)



Introduction

The Church in Pittsburgh was originally established in 1983, primarily through a migration of saints from Ohio. Some years after a turmoil, the church was re-established in 2007 and the church entity was incorporated in 2017 as the Church of God in Pittsburgh (www.churchinpg.org). The church does not presently have a meeting hall, but meets on university campuses and in various saints' homes. Approximately 40 saints gather on the Lord's Day mornings, including a handful of children. The racial composition of the church is 59% Chinese, 16% White, and the remaining 25% a mix of Korean, Vietnamese, Black, and Indian.

The current Church life in Pittsburgh focuses primarily on campus work at the University of Pittsburgh (UPitt) and Carnegie Mellon University (CMU), though the need to gain more families is of equal priority (and not necessarily separate). Each year, the Lord adds remaining fruit to His Body through laboring on the campuses to gain college and graduate students, and sometimes university staff. In the past 12 years

of campus work, dozens have been gained, but many have moved away. Only a handful of them have been non-Asian.

While the saints in Pittsburgh welcome all who would like to move here, we particularly see a need for young non-Asian families to migrate to the Pittsburgh area in order to share the burden of shepherding and gaining some from the population of American students and families for the strengthening of His testimony in this region.

In the past years, the Church in Pittsburgh has reached significant milestones, including establishing a new church entity, beginning a children's service schedule, and supporting two Christians on Campus clubs at UPitt and CMU. These clubs have around ten student members each.

Location, Climate, and Health

Pittsburgh is located in Allegheny County near the southwest corner of Pennsylvania at the confluence of the Allegheny, Monongahela, and Ohio Rivers. Driving times to several localities in the region are:

- Morgantown, WV – 1:20
- Cleveland/Wickliffe, OH – 2:00
- Columbus, OH – 3:00
- Buffalo, NY – 3:20
- Washington, DC – 4:00
- Ann Arbor, MI – 4:20
- Philadelphia, PA – 4:40

Western Pennsylvania has four distinct seasons: winters are cold, cloudy, and moderately snowy; springs and falls are generally mild with moderate levels of sunshine; and summers are warm and humid. Average annual precipitation is 38.2 inches, and snowfall averages 41.4 inches per season (*Wikipedia*). Over the course of the year, the temperature typically varies from 23°F to 83°F and is rarely below 7°F or above 91°F (*Weatherspark*).

The two largest area healthcare providers are the world-renowned University of Pittsburgh Medical Center (UPMC) and Allegheny Health Network. Both flagship hospitals annually rank as among the best overall in the United States, with UPMC being among U.S. News and World Report's "Honor Roll" every year since 2000 (*Wikipedia*).

Demographics

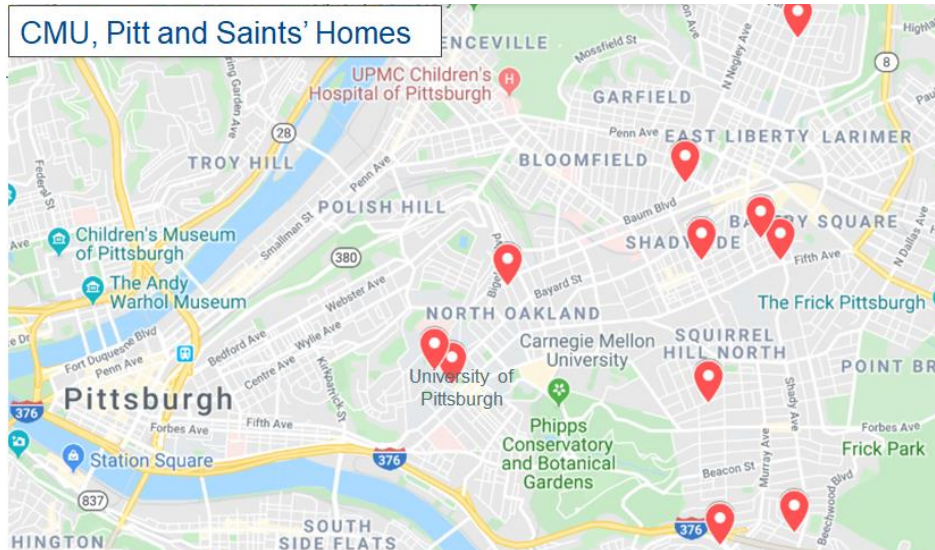
The Pittsburgh metropolitan area has more than 300,000 people, and the Greater Pittsburgh area has a population of 2.3 million. Pittsburgh is the second largest city in Pennsylvania behind Philadelphia. The racial makeup of Pittsburgh is 65% White, 26% Black, 2.3% Hispanic, 4.4% Asian, and 2.3% mixed or other.

Housing

Pittsburgh is home to 90 diverse and eclectic neighborhoods. On Zillow, the median home value in Pittsburgh is \$149,500, but prices vary widely by neighborhood and house characteristics. The median

price of homes currently listed in Pittsburgh is \$219,000, while the median price of homes that sold is \$154,400. The median rent price in Pittsburgh is \$1,400.

We recommend that the migrating saints look for housing in the area near the campuses of CMU and UPitt, which are adjacent to each other in a neighborhood named Oakland. Oakland is about 3.5 miles away from downtown Pittsburgh. Many student saints live in Oakland and the surrounding neighborhoods that are within 10 minutes of driving, such as Shadyside and Squirrel Hill. Most of the working saints also reside in or near these areas. The crime rate in these areas is low. Many student saints walk or take the bus to and from school, even late at night.



The areas recommended above are older neighborhoods. The Zillow median home values in these areas are \$182,900 for Oakland, \$376,900 for Shadyside, \$604,400 for North Squirrel Hill, and \$344,900 for South Squirrel Hill. A three-bedroom condominium near the two universities costs between \$200,000 and \$300,000.

In 2015, Pittsburgh was listed among the "eleven most livable cities in the world," and it has frequently been ranked as the most or second-most livable city in the United States.

Economy / Employment

The economy of Pittsburgh, Pennsylvania is diversified, focused on services, medicine, higher education, tourism, banking, corporate headquarters, and high technology. Once the center of the American steel industry, and still known as "The Steel City," today the City of Pittsburgh has no steel mills within its city limits, though Pittsburgh-based companies such as U.S. Steel, Ampco Pittsburgh, and Allegheny Technologies own several working mills in the Pittsburgh metropolitan area (*Wikipedia*).

Major employers and industries

- Several Fortune 500 companies, including PNC Bank, Kraft Heinz, Alcoa, PPG, and U.S. Steel, are based in Pittsburgh.

- Academic - the greater Pittsburgh area has 76 colleges and universities, of which the best known are the University of Pittsburgh and Carnegie Mellon University.
- Medical - The University of Pittsburgh Medical Center (UPMC) is the largest employer (40,600) in the Pittsburgh area and statewide. UPitt has a nationally-ranked, top-20 medical school.
- Technology - Google has 1,500 employees in Pittsburgh. Uber’s driverless car division (1,000 employees) is based in Pittsburgh. Google, Amazon, Apple, Bosch, Facebook, Uber, Nokia, Autodesk, Microsoft, and IBM are among 1,600 technology firms in the area.
- Banking - the nation’s fifth largest bank (PNC) is based in Pittsburgh.
- Law - Six of the top 300 U.S. law firms make their global headquarters in the area.

Largest employers

Rank ↕	Employer ↕	Number of Pittsburgh employees ↕	Product(s) ↕
1	University of Pittsburgh Medical Center	40,600	Health care
2	University of Pittsburgh	12,600	Higher education
3	PNC Financial Services	9,200	Financial services
4	Allegheny Health Network	8,900	Health care
5	Giant Eagle	8,000	Supermarkets
6	Bank of New York Mellon	7,610	Financial services
7	Highmark	5,270	Health insurance
8	U.S. Steel	4,700	Steel manufacturing
9	Carnegie Mellon University	4,600	Higher education
10	Verizon Communications	3,750	Telecommunications

*Wikipedia, https://en.wikipedia.org/wiki/Economy_of_Pittsburgh

Present occupations and employers of the saints

- Allegheny General Hospital
- Carnegie Mellon University
- CVS Pharmacy
- Emerson Electric
- Google
- Massaro Construction Group
- Rapid Flow Technologies
- University of Pittsburgh
- UPMC (University of Pittsburgh Medical Center)

Transportation

Pittsburgh International Airport (PIT) is the primary airport providing commercial passenger service to the metropolitan area. PIT is the second-busiest passenger airport in Pennsylvania and 47th-busiest in the United States. The following airlines fly out of PIT: Air Canada Express, Alaska Airlines, Allegiant Air, American Airlines, American Eagle, Boutique Air, British Airways, Condor, Delta Air Lines, Delta Connection, Frontier Airlines, JetBlue, Southern Airways Express, Southwest Airlines, Spirit Airlines, United Airlines, and United Express.

The Port Authority of Allegheny County is the region's mass transit system. Port Authority runs a network of intracity and intercity bus routes, a light rail system that runs mostly above-ground in the suburbs and underground as a subway in the city, and one of the nation's largest busway systems.

Both Uber and Lyft operate in Pittsburgh. There is a public bike sharing system in Pittsburgh.

Transportation by automobile is prevalent. Locals refer to the highways from downtown Pittsburgh as the "parkways." Interstate 376 is both the "Parkway East" connecting to I-76 (Pennsylvania Turnpike) and the "Parkway West" connecting to I-79, the Pittsburgh International Airport, the Ohio end of I-76 and I-80. The "Parkway North" is I-279 connecting to I-79. There is also a non-expressway County Belt System for automobile travel in Pittsburgh and Allegheny County.

Campuses

The largest university in Pittsburgh is the University of Pittsburgh (UPitt), which has 28,600 students and four regional campuses in Western Pennsylvania. There are about 6,000 international students, scholars, staff, and faculty at UPitt. Prominent nationally-ranked programs include business management, engineering, health professional, and biomedical sciences.

Carnegie Mellon University (CMU) is a private research university in Pittsburgh with nearly 14,000 students. CMU has over a dozen degree-granting locations in six continents. Prominent nationally-ranked programs include Computer Science, Artificial Intelligence, and Robotics.

The Community College of Allegheny County (CCAC) has 18,900 students spread across four campuses and four centers throughout Allegheny and Washington counties.

Other colleges in Pittsburgh include Duquesne University, Point Park University, Chatham University, and Carlow University.

Schools

Public schools. The school district operates 54 schools with 3,900 full-time employees (1,985 teachers) and serves 23,331 students with a 2018 General Fund Budget of \$625.1 million, or nearly \$26,800/student. There are 22 elementary schools (K-5), 11 schools for grades K-8, 10 schools classified as middle schools (6-8) or Accelerated Learning Academies, and 3 secondary schools (6-12). Six high schools serve particular groups of Pittsburgh neighborhoods.

Local public schools include many charter and magnet schools, including City Charter High School (computer and technology focused), Pittsburgh Montessori School, Pittsburgh Gifted Center, Barack Obama Academy of International Studies 6-12, Pittsburgh Creative and Performing Arts 6-12, Pittsburgh Science and Technology Academy, the Western Pennsylvania School for Blind Children, and the Western Pennsylvania School for the Deaf.

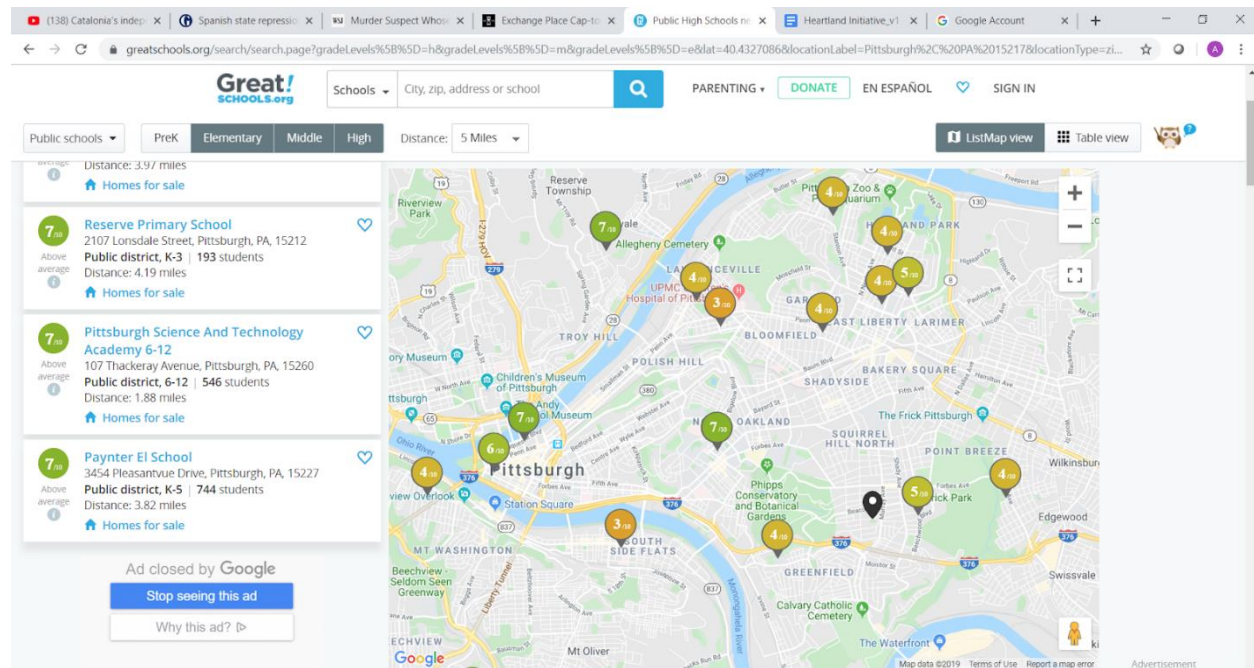
Private schools. Private schools in Pittsburgh include Bishop Canevin High School, Central Catholic High School, Oakland Catholic High School, Winchester Thurston School, St. Edmund's Academy, Hillel Academy of Pittsburgh, Yeshiva Schools, and The Ellis School. Shadyside Academy maintains a 'Pre-K

through 5' primary school campus in the Point Breeze neighborhood, in addition to its '6 through 12' middle and high school campuses in nearby suburban Fox Chapel.

Homeschooling. Parents in Pennsylvania can teach their children at home. Pennsylvania's law on home education is called Act 169. Information about this law is online at: <https://bit.ly/2t5QCmN>

- School districts
- School ratings
- Public and private schools

<https://bit.ly/2Lly96e>



Interests

Listed below are some interests served in Pittsburgh and the surrounding area.

Science and nature: Carnegie Museum of Natural History, Carnegie Science Center, Pittsburgh Zoo and PPG Aquarium, Phipps Conservatory and Botanical Gardens, the National Aviary.

Arts and culture: Carnegie Museum of Art, Frick Art and Historical Center, Pittsburgh Center for the Arts, Andy Warhol Museum, Heinz Hall for the Performing Arts (home of Pittsburgh Symphony Orchestra), the Benedum Center (home of Pittsburgh Opera), Byham Theater, Pittsburgh Ballet Theatre, Senator John Heinz History Center and Western Pennsylvania Sports Museum, Fort Pitt Museum, Soldiers and Sailors Memorial Hall and Museum, Children's Museum of Pittsburgh, Cathedral of Learning's Nationality Rooms.

Professional sports: Pittsburgh Pirates (MLB), Pittsburgh Steelers (NFL), Pittsburgh Penguins (NHL), Pittsburgh Riverhounds (USL), Steel City Yellow Jackets (ABA).

Annual major sporting events: Pittsburgh hosts several annual events, including the Three Rivers Regatta, the Pittsburgh Vintage Grand Prix, the Dirty Dozen Cycle Race, the Pittsburgh Marathon, the Great Race 10K, and the Head of the Ohio Regatta.

Western Pennsylvania attractions and vacation destinations: Kennywood (amusement park), Sandcastle Water Park, Gateway Clipper Fleet (boat tours), Mount Washington (scenery), Frank Lloyd Wright's Fallingwater (Mill Run), Ohiopyle State Park (Laurel Highlands), Presque Isle State Park (Erie), Allegheny National Forest, Three Rivers Heritage Trail, Great Allegheny Passage, Laurel Highlands Trail, Nemaquin Woodlands Resort, Seven Springs Mountain Resort (skiing).